



Services run smoothly!

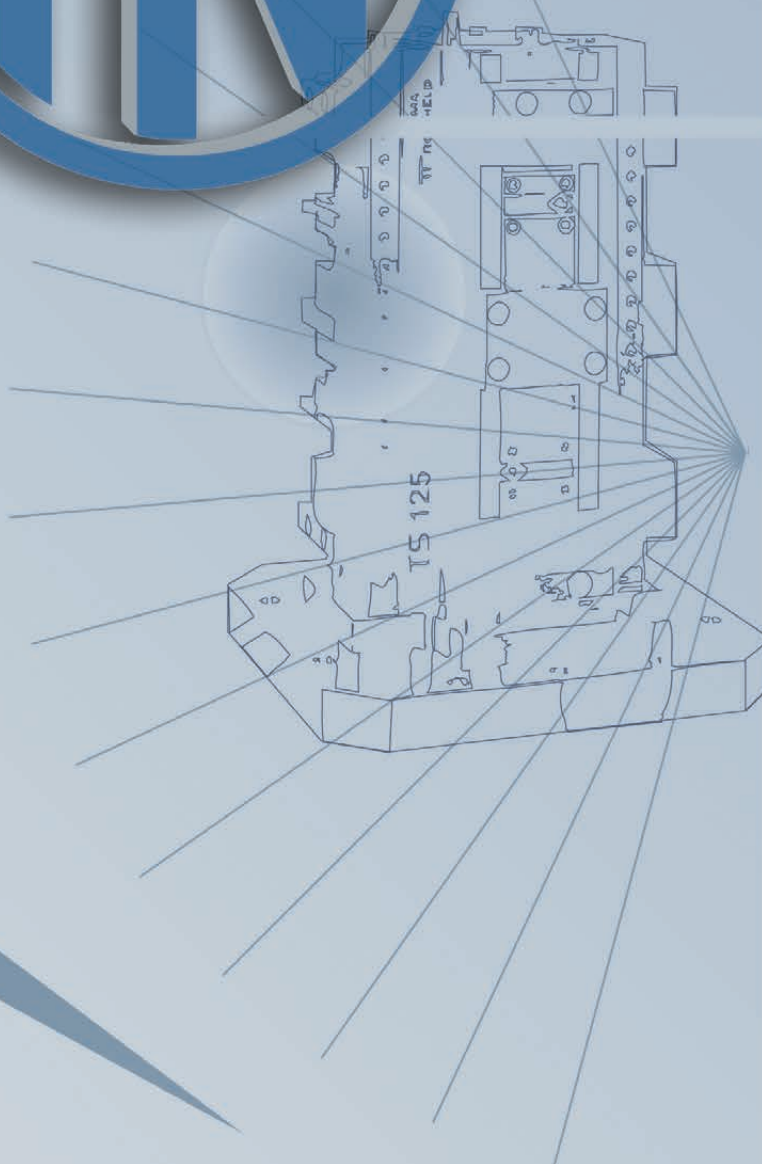
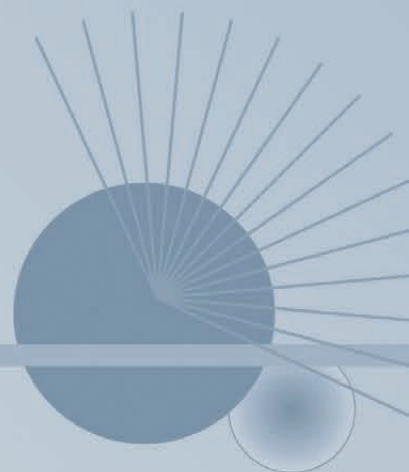


Image brochure

02/2016





FN Niederhauser AG was founded by Fritz Niederhauser at the end of November 1989. It was initially called Fritz Niederhauser Service AG, continuing under that name until 1991. The company was originally a business trading in clamping equipment that had its own service department. In 1992 Daniel Manetsch took over Fritz Niederhauser Service AG with a mission and vision to transform the trading enterprise into a strong service company in the workpiece clamping technology sector. The machine tool park was successively adapted to customer requirements and continuously renewed. The further development of our product range saw it outgrow the production facility in Horw, so in January 2012 we moved to our new site in Sempach.



On 1 January 2015, FN Niederhauser AG was taken over by a long-standing employee, Roland Helfenstein.

Today **FN Niederhauser AG** is known well beyond the borders of the country and valued both for its large range of standard products as well as for its customized clamping solutions.

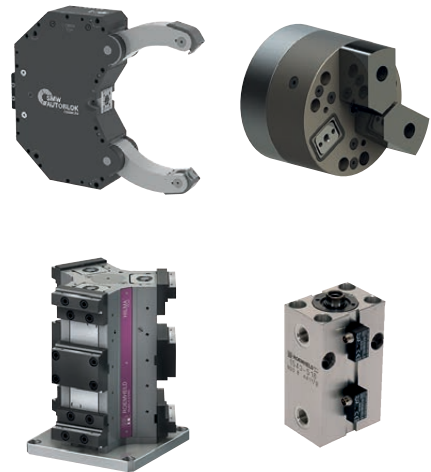
We are known on the market by our motto „**Clamping solutions that get you there**“.

Workpiece clamping is a very complex task and the crucial link between machine and workpiece. We can bring our practical experience and that of our suppliers to bear on a day-to-day basis, enabling us to offer you huge benefits. We can offer package solutions in clamping technology from a single source, from simple clamping tasks to complete system solutions. We would be happy to handle your clamping tasks. Our in-house production allows us to tailor a solution to meet your specific requirements.

■ Our core businesses

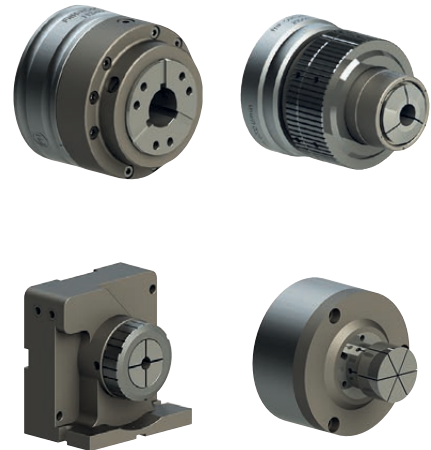
Trade

In Switzerland and Liechtenstein we are the industry representatives for leading manufacturers such as SMW-AUTOBLOK GmbH, the Römheld group (Römheld/Hilma/Stark), Halder Erwin KG, PML Pneumatic Chucks and Schaublin Collet Chucks. SMW-AUTOBLOK is one of the world's leading manufacturers of clamping systems for rotary machining in turning and grinding operations on machine tools, with ultramodern production facilities in Meckenbeuren, Germany and Caprie, Italy. Römheld, Hilma and Stark – the three brands of the ROEMHELD group – are among the global market leaders for productive solutions in industrial manufacturing, assembly, clamping and drive technology. Our mechanical, hydraulic, pneumatic and electric clamping elements help us make your production more efficient and flexible.



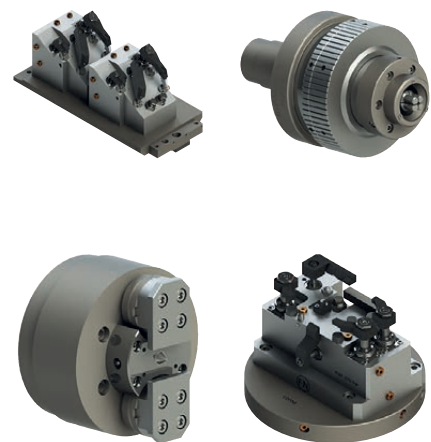
In-house products

We are manufacturers of collet chucks in a range of designs, from the standard to the fully customized version. These collet chucks are developed in our company and produced in our own manufacturing facility. We offer these clamping systems with manual, pneumatic or power operation. The collet chucks can be used in rotary and stationary applications. Our latest development is a collet chuck with stroke adjustment. The mechanical stroke adjustment mechanism of the FNO-K, FNP-KAH and FNF-KAH collet chuck types allows thin-walled or positive locking workpieces such as rings, discs, sleeves, eccentric shafts etc. to be clamped reliably and without any deformation.



Customizations

The very wide portfolio of products either from our suppliers or manufactured in-house enables us to offer package solutions in clamping technology from a single source. These could include hydraulic and pneumatic devices integrated with a zero point clamping system or vice systems with special jaws as well as mountings and special clamping jaws for chucks on lathes and grinding machines.



Machine park



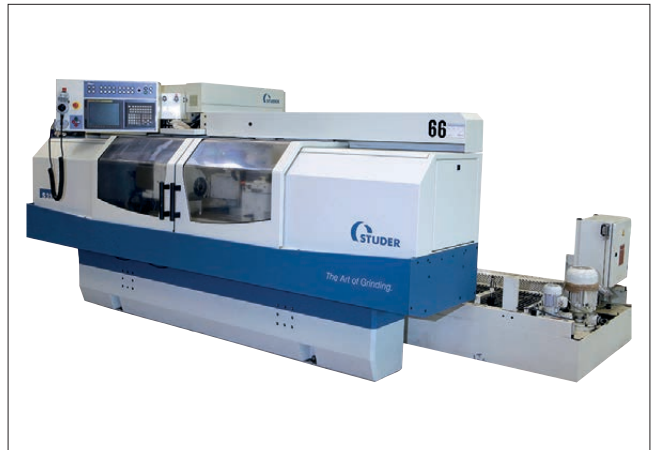
Milling Machine AKIRA-SEIKI V5,5 XP



Milling Machine Okuma Mac Turn 250



Milling Machine BRIDGEPORT VMC 600 / 22



Grinding Machine STUDER S33



CNC Turning Machine emcoturn



Turning Machine HACO/FAT TUR 630MN

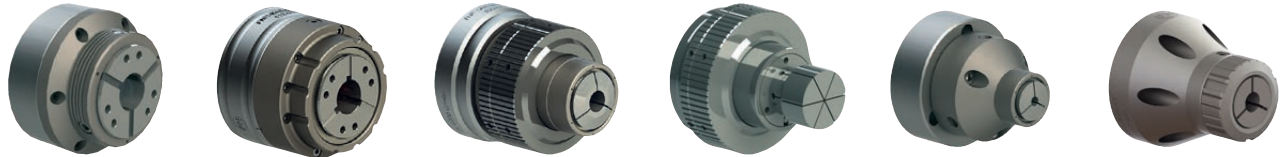
House Product line

■ Collet chucks manual for draw-back collets and pressure collets



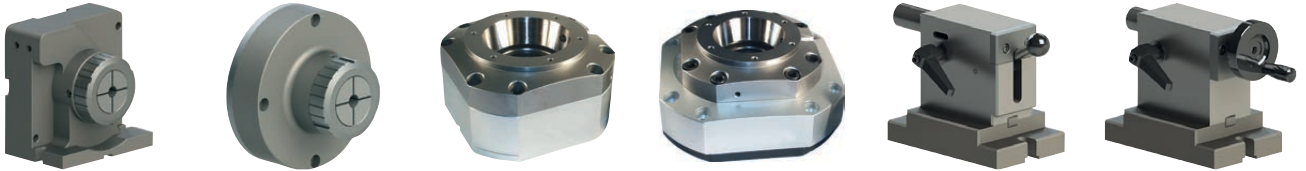
For all commercially available collets

■ Collet chucks power-operated for draw-back collets and pressure collets



Standard chuck, Push collet chuck with stroke limiter, Push collet chuck slim design

■ Stationary equipment



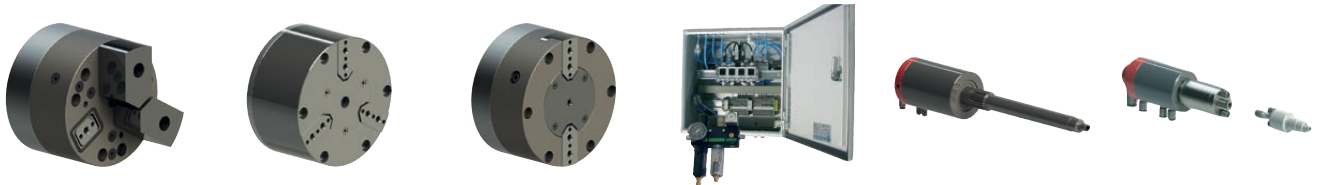
Various versions pneumatically or hydraulically

■ Manual chucks



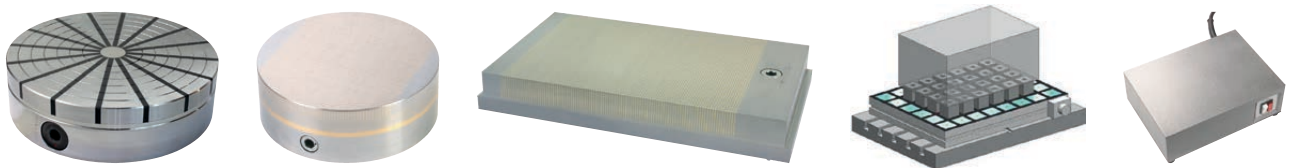
Lathe chucks, Wedge-bar chucks, Fine-adjustment chuck, Accessories

■ High-Precision Air-Chuck type PML



High-precision chuck, Pneumatic control unit, Rotary feed

■ Magnetic clamping technology



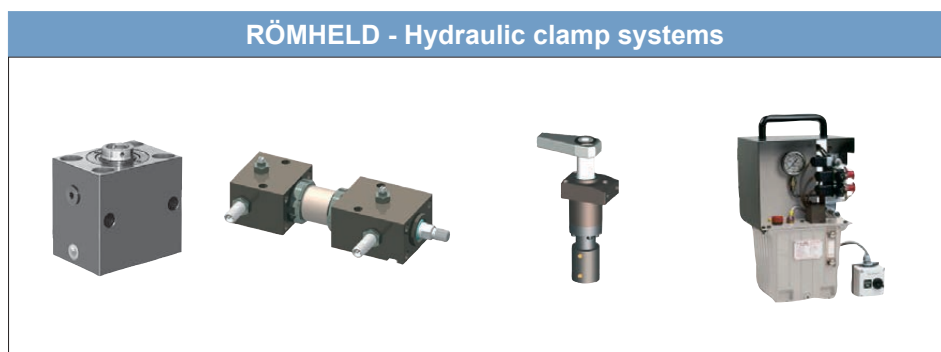
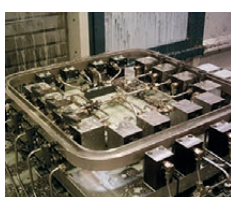
Permanent magnetic circular chucks, Magnetic chucks for grinding, Milling magnets, Accessories

■ Distributer of the following companies

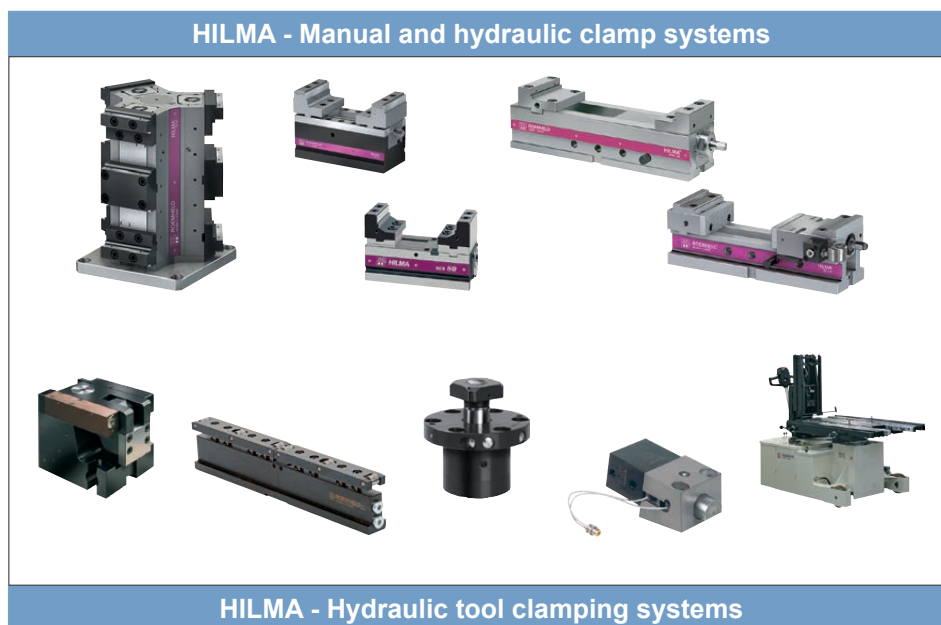
HALDER



ROEMHELD HILMA ■ STARK



ROEMHELD HILMA ■ STARK



ROEMHELD HILMA ■ STARK



Distributor of the following companies

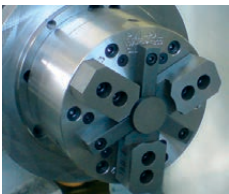
SCHAUBLIN



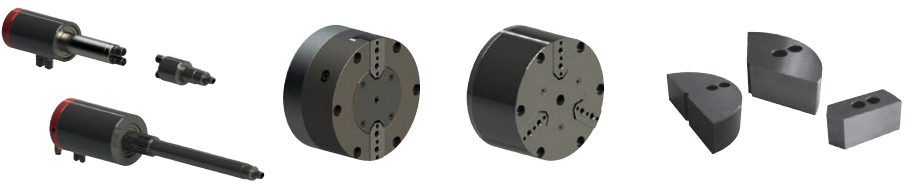
Expanding arbors / Collets



 **PML**



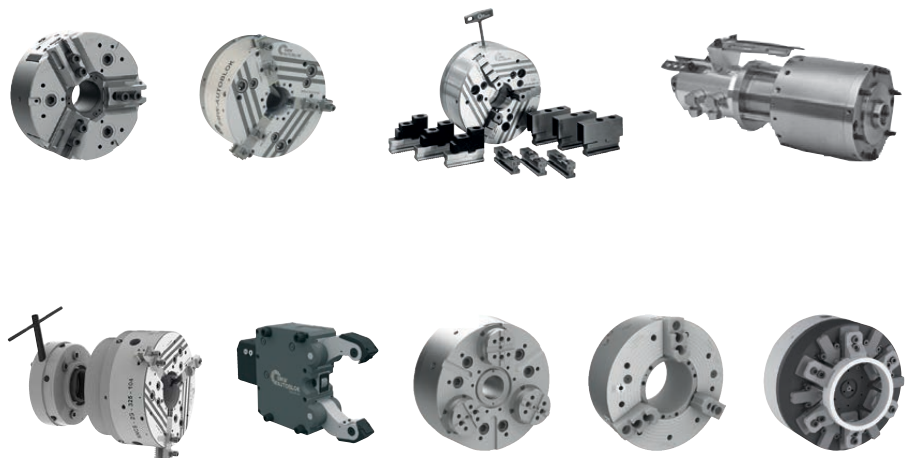
High precision air chuck



 **SMW[®]
AUTOBLOK**



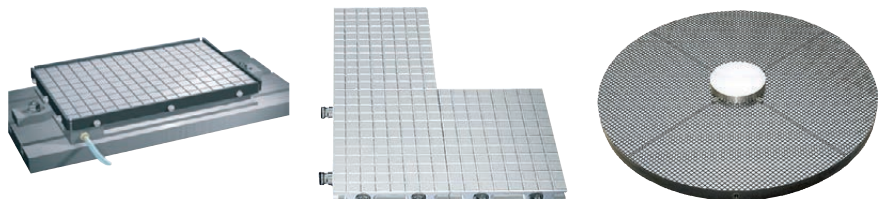
Clamping systems for the rotary machining



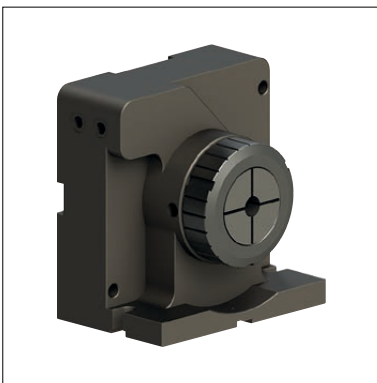
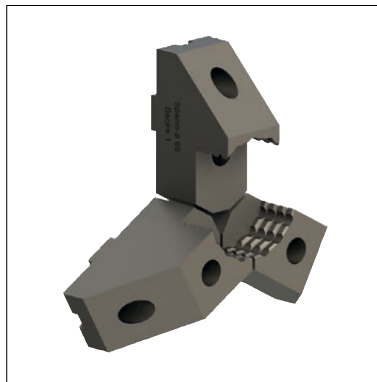
WITTE

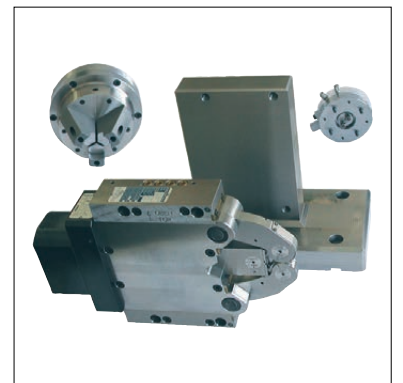
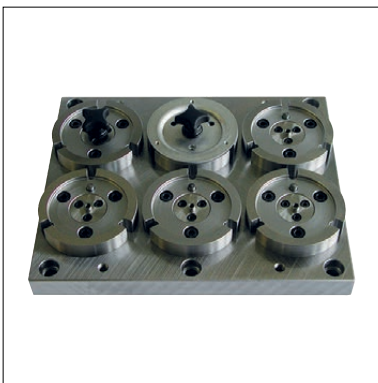
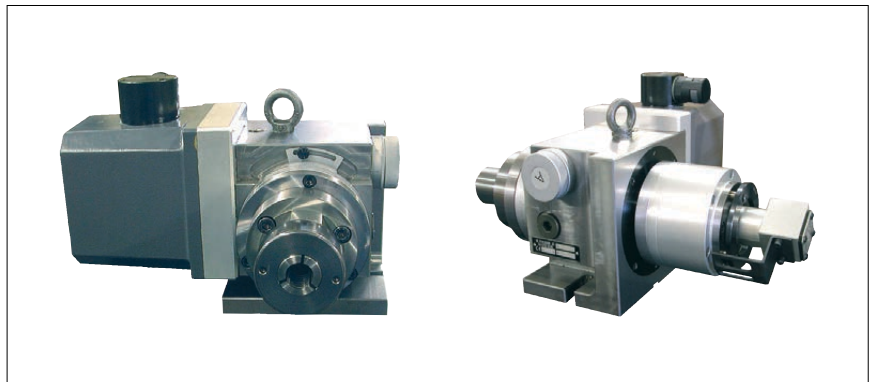
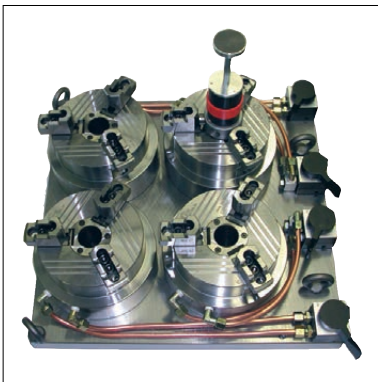
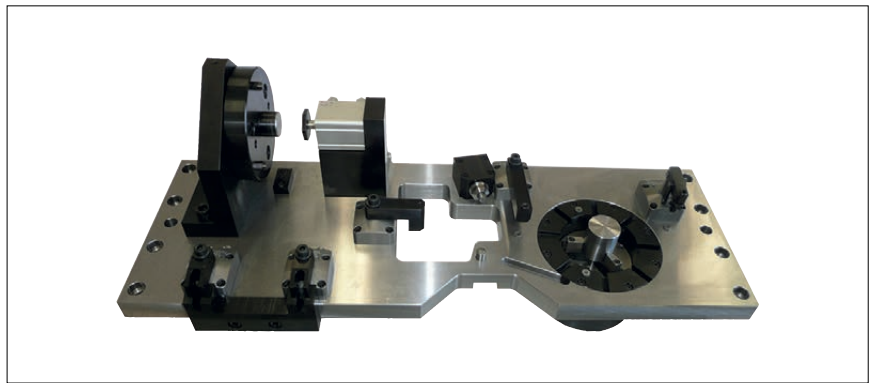
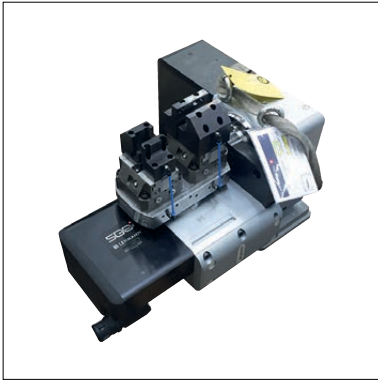


Vacuum plates / Chucks / Aggregates

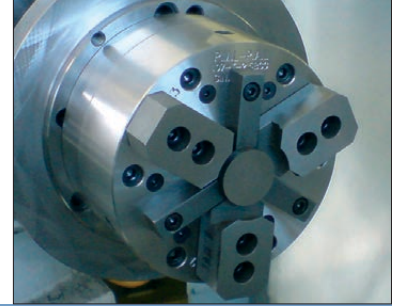
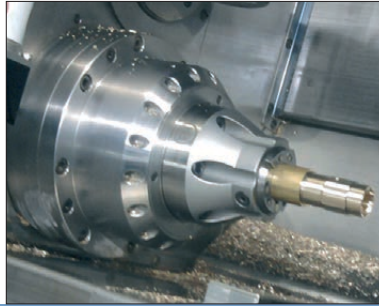
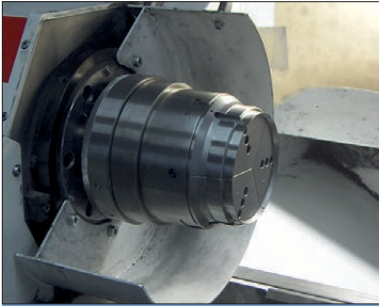
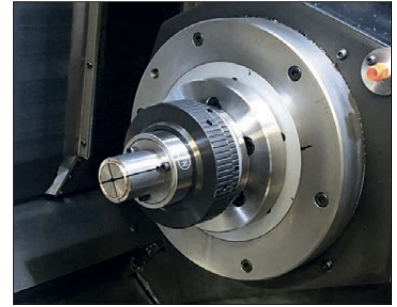
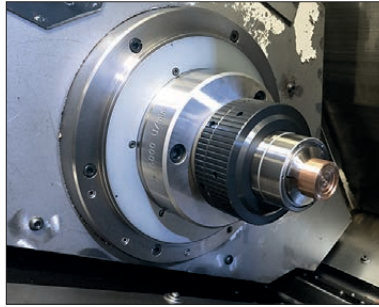
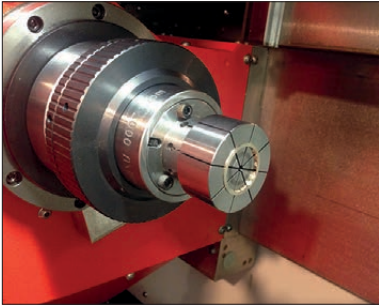


■ Special applications

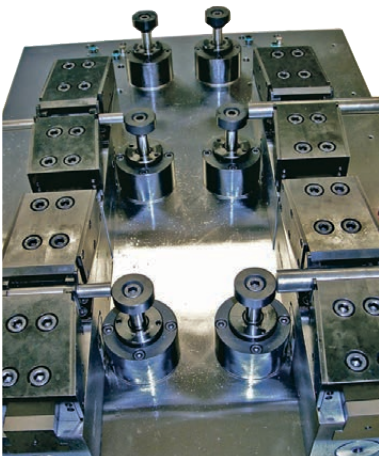




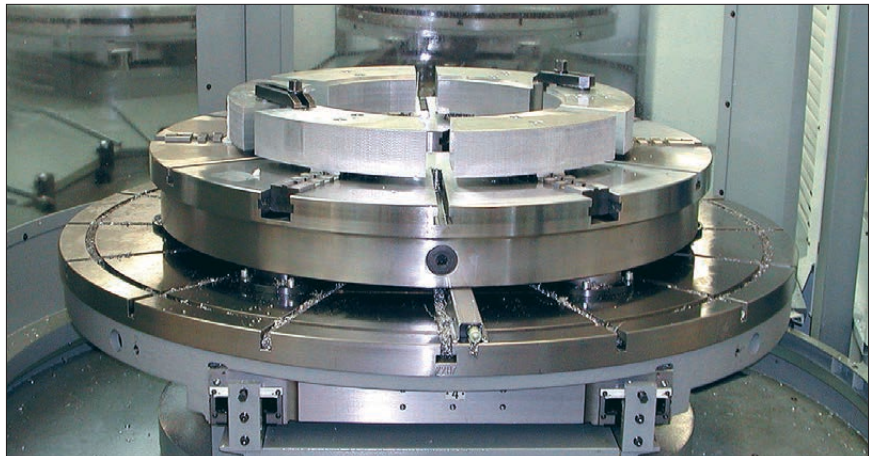
■ Applications



FN chuck in use



Clamping device



Lehmann dividing head with Trigo tower clamping system



4-way set-up for dividing head